

Moorage Tenant Survey – Key findings

7/23/2014

Survey overview

Data collection dates	June 26 to July 14, 2014
Number of respondents	149
Target audience	Moorage tenants within 1.2-mile Westlake Avenue N corridor

The Seattle Department of Transportation (SDOT) conducted an online survey to better understand how moorage tenants use parking and loading zones along the Westlake Corridor.

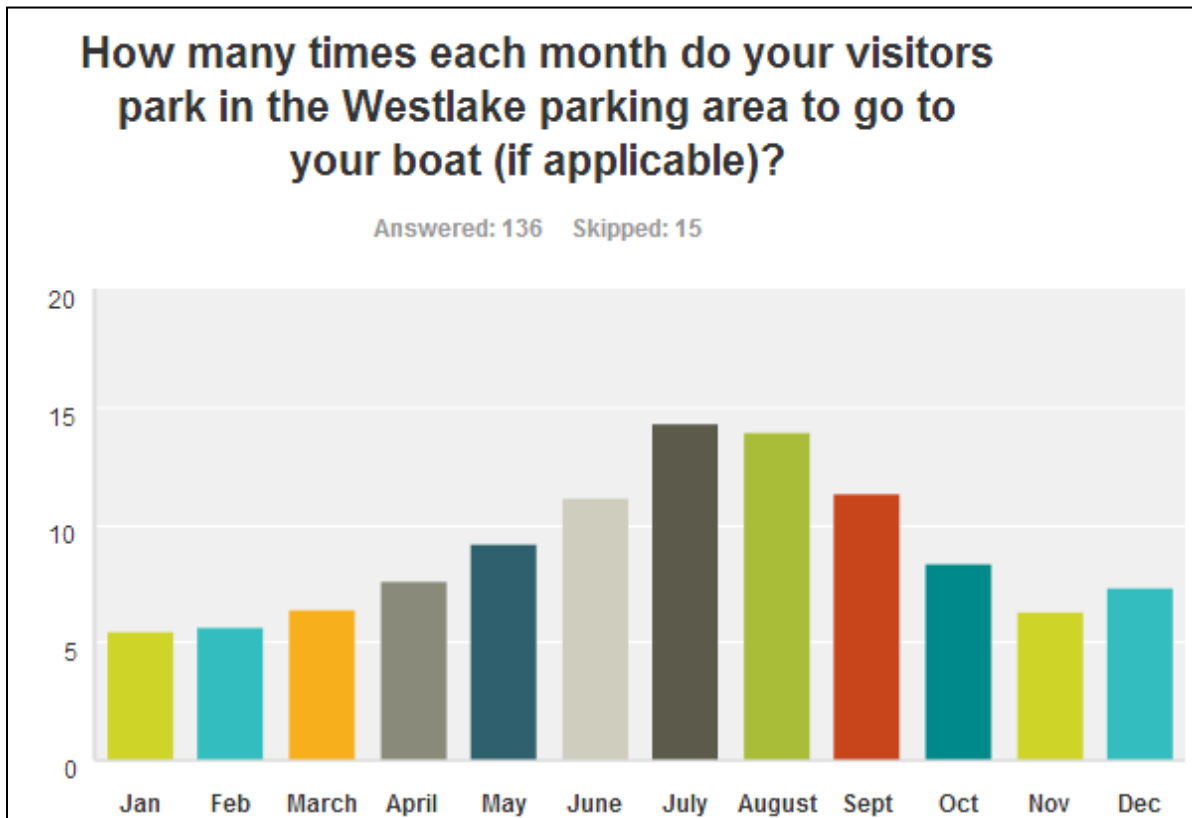
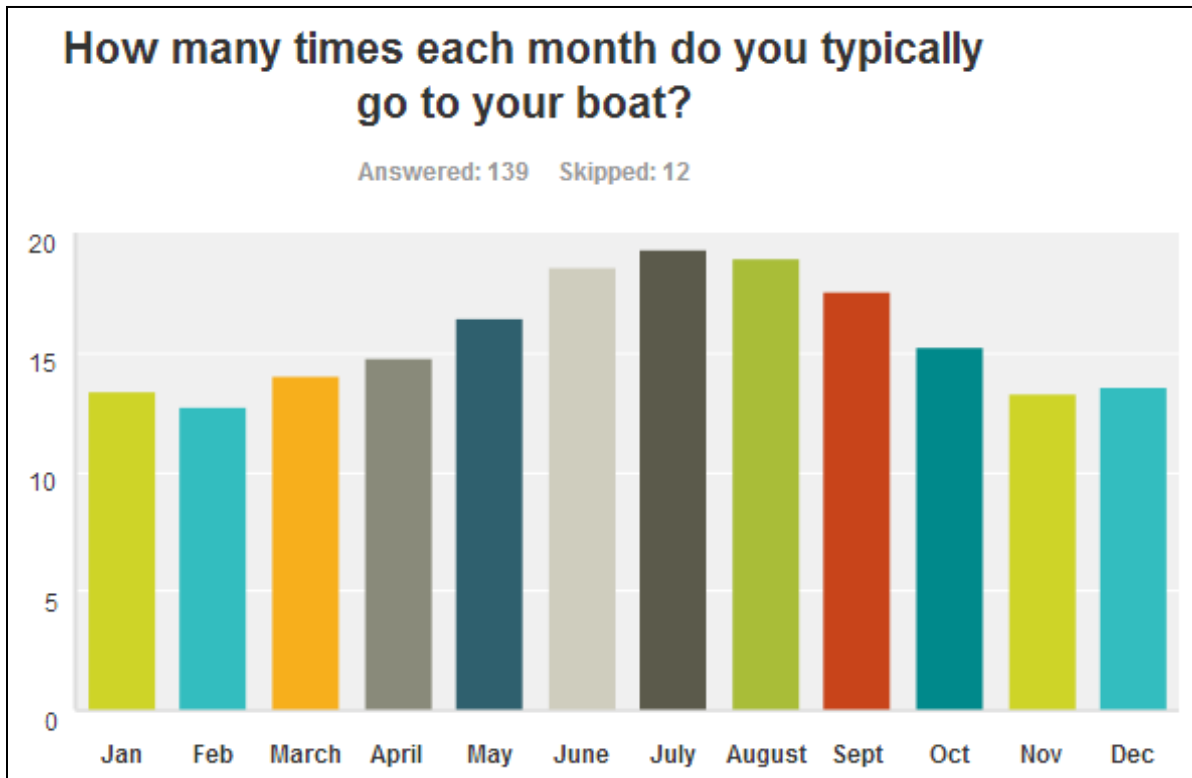
Responses

Most responses came from tenants who moor boats at Marina Mart Moorings. Respondents access their boats year-round but most often in the summer months. The majority of respondents drive to reach their boat and 93% load and unload from their parking spot (rather than in the loading zones). Respondents report parking their cars for shorter periods of time (0-4 hours) in the winter and longer periods of time in the summer (8 hours or more). Thirty-six respondents reported parking for over 72 hours in the summer.

When asked if there is anything else the project team should know about boat access in the Westlake corridor, responses included: concerns about parking loss and “park and riders,” concerns about loading and unloading needs, and comments about bicycle speed and the need for more predictability.

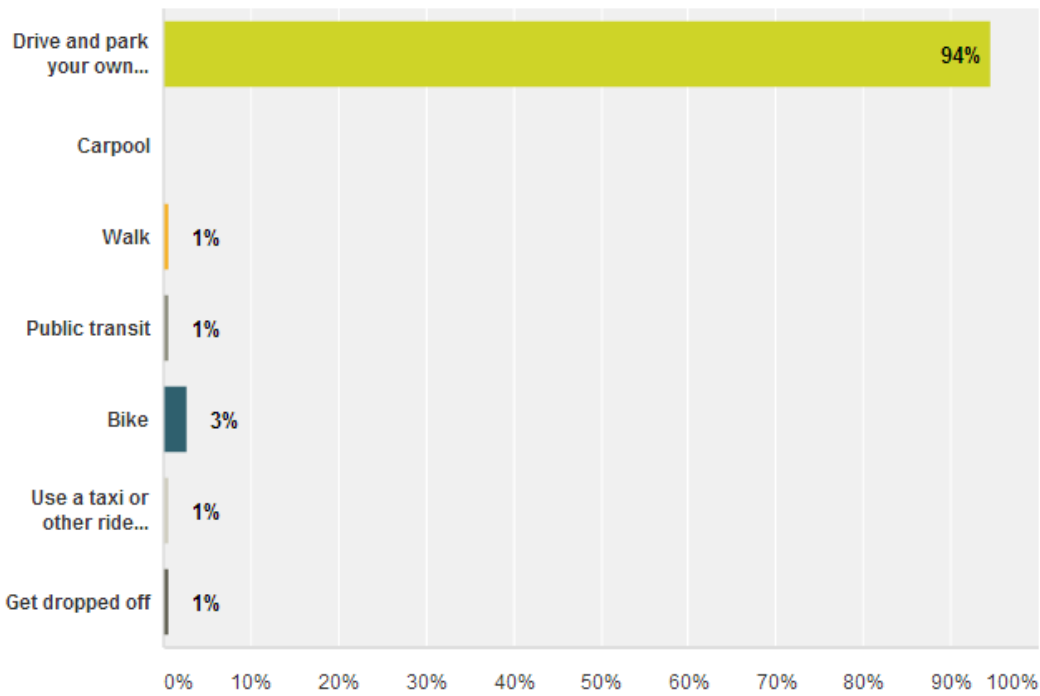
Boat moorage location

AGC Marina	19%	
Boatworld Marina	3%	
Commercial Marine	6%	
Diamond Marina	1%	
Julie's Landing	1%	
Lee's Landing	5%	
Marina Mart Moorings	44%	
Nautical Landing	1%	
Swiftsure Marina	0%	
Western Yacht Harbor	0%	
Westlake Marina	5%	
Youngquist Marina	1%	
*Other (please specify)	14%	*Other responses included Waterworks Marina, Lake Union Building, Roche Harbor Marina and China Harbor Marina.



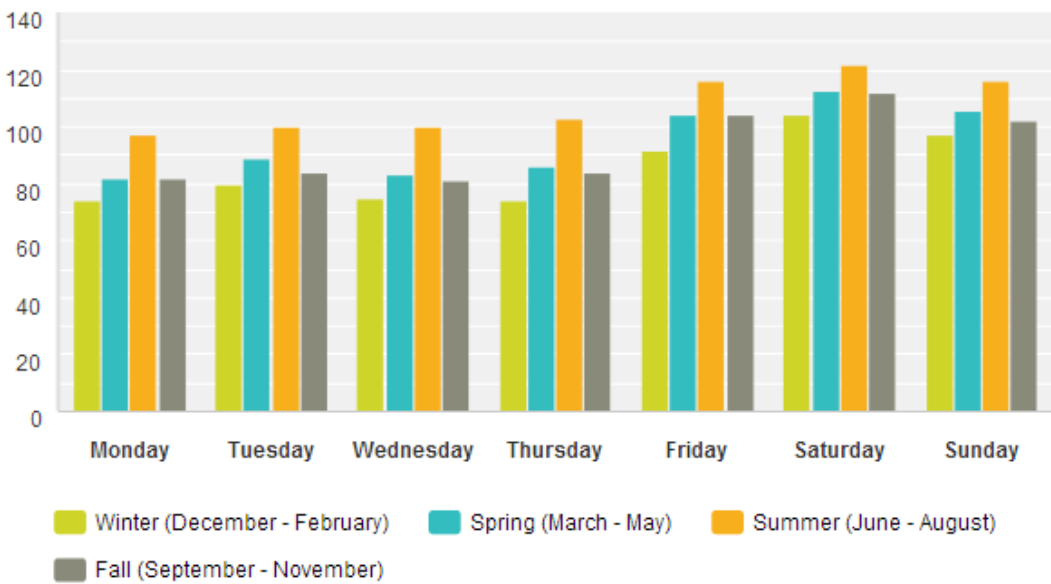
When you go to your boat do you typically:

Answered: 145 Skipped: 6



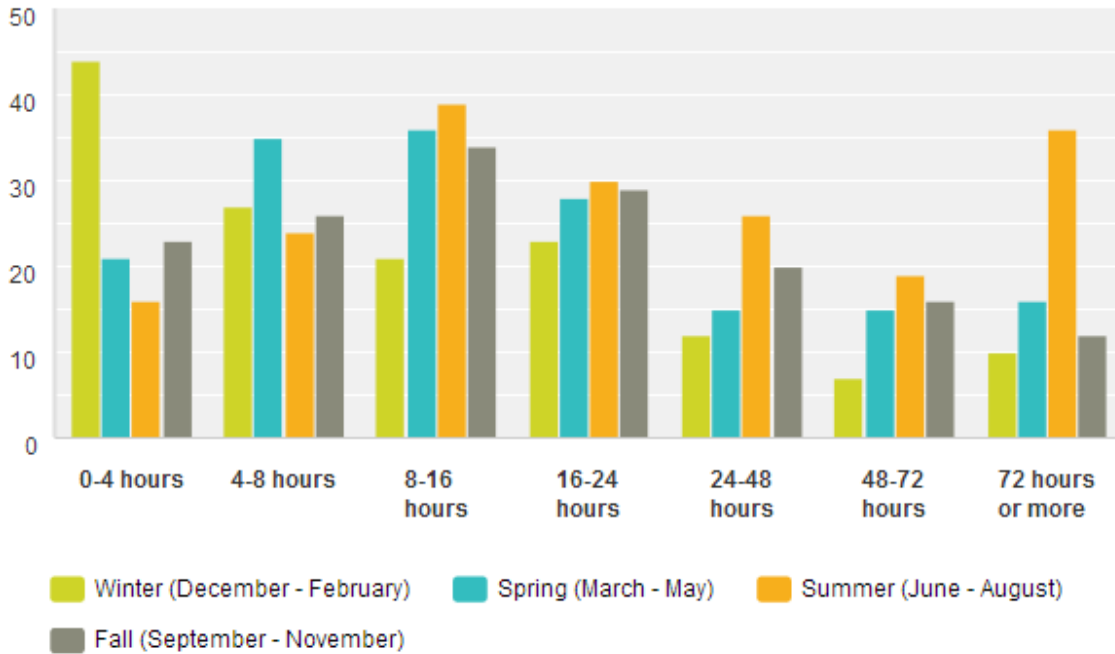
What days do you typically park to go to your boat? Check all that apply.

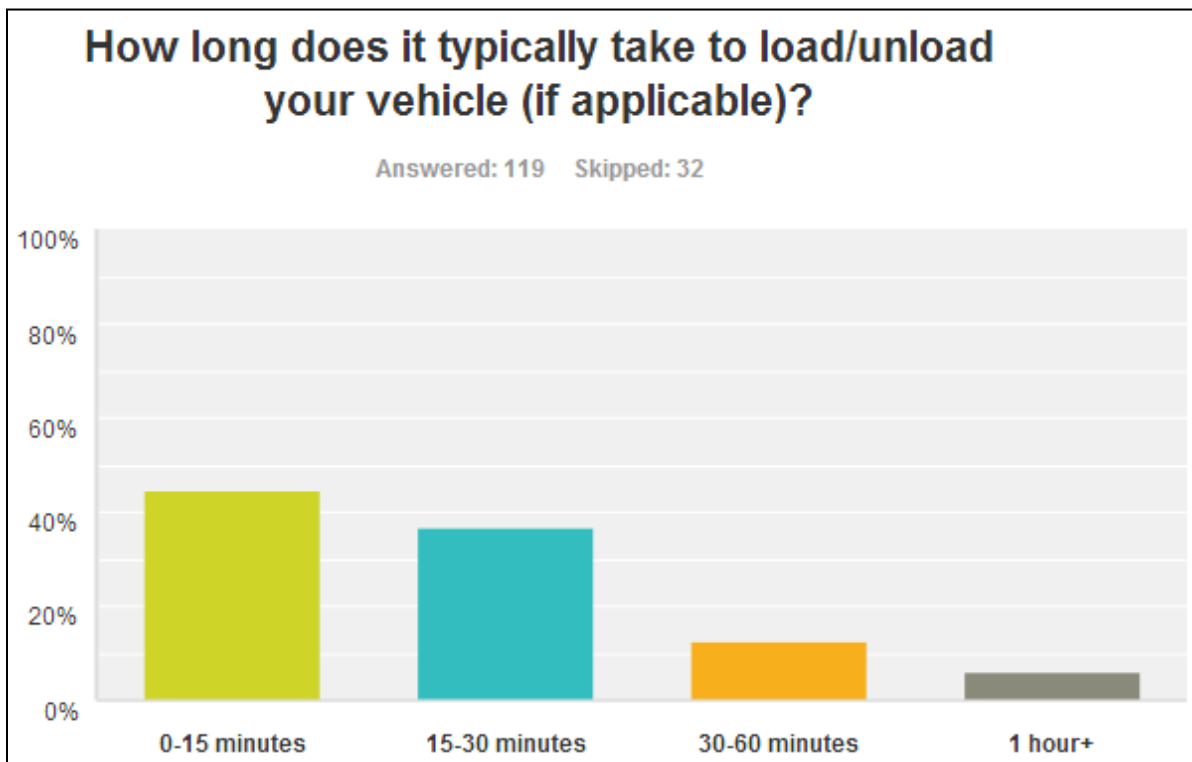
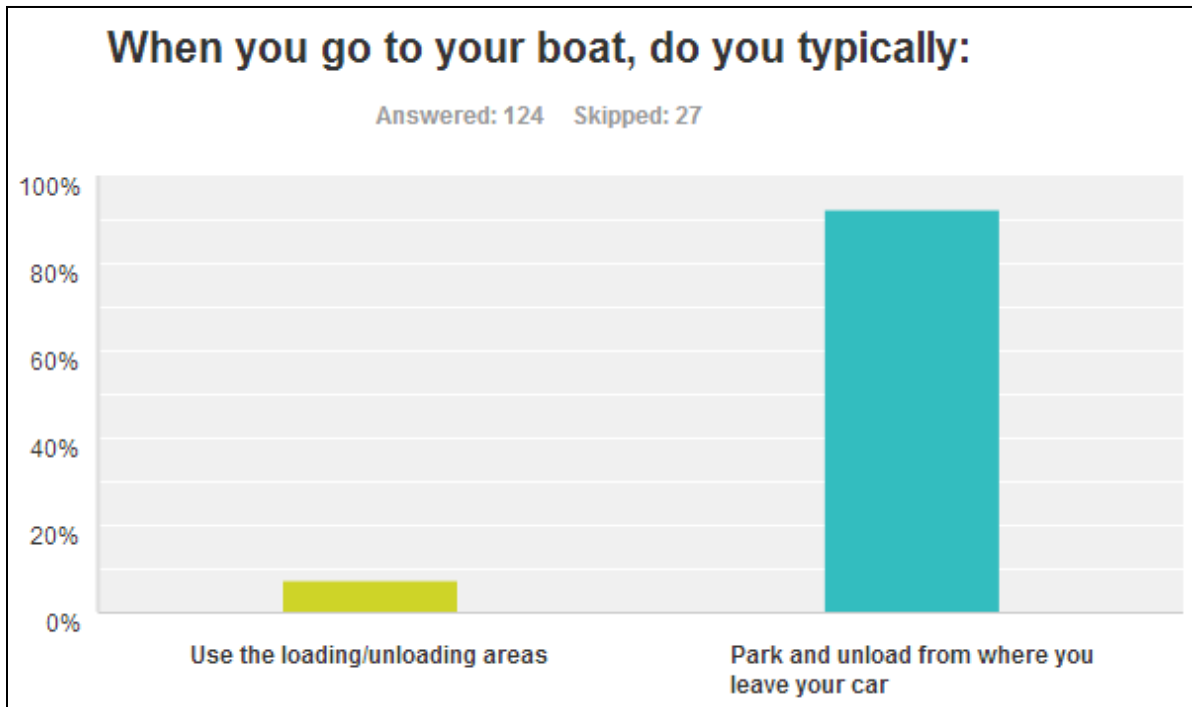
Answered: 129 Skipped: 22



When you park your car, how long is it typically in the lot (if applicable)?

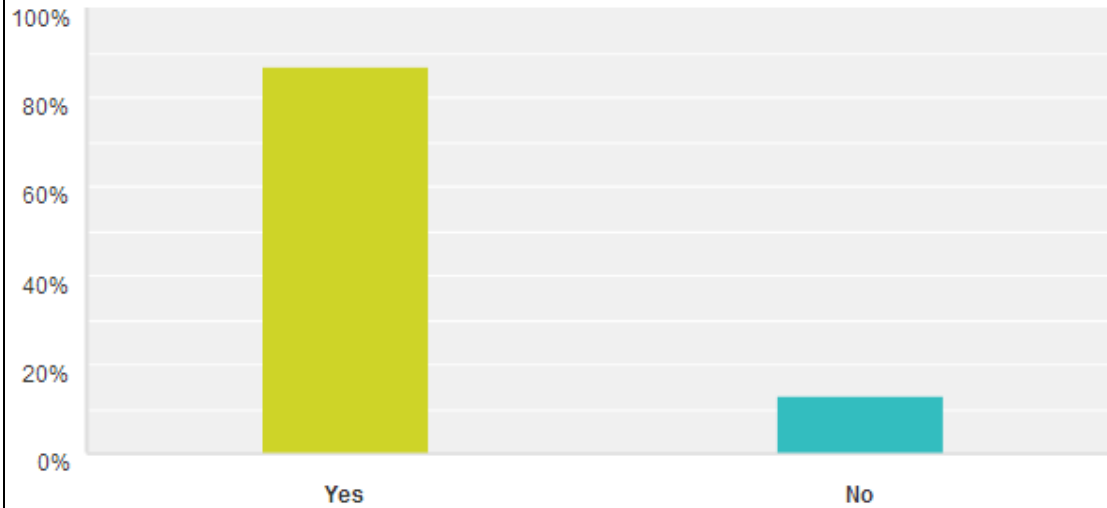
Answered: 129 Skipped: 22





Do you have access to a wheeled cart to load/unload your vehicle?

Answered: 132 Skipped: 19



Please indicate where you normally park to go to your boat, as well as where you load and unload your boat. Check all that apply.

Answered: 121 Skipped: 30

